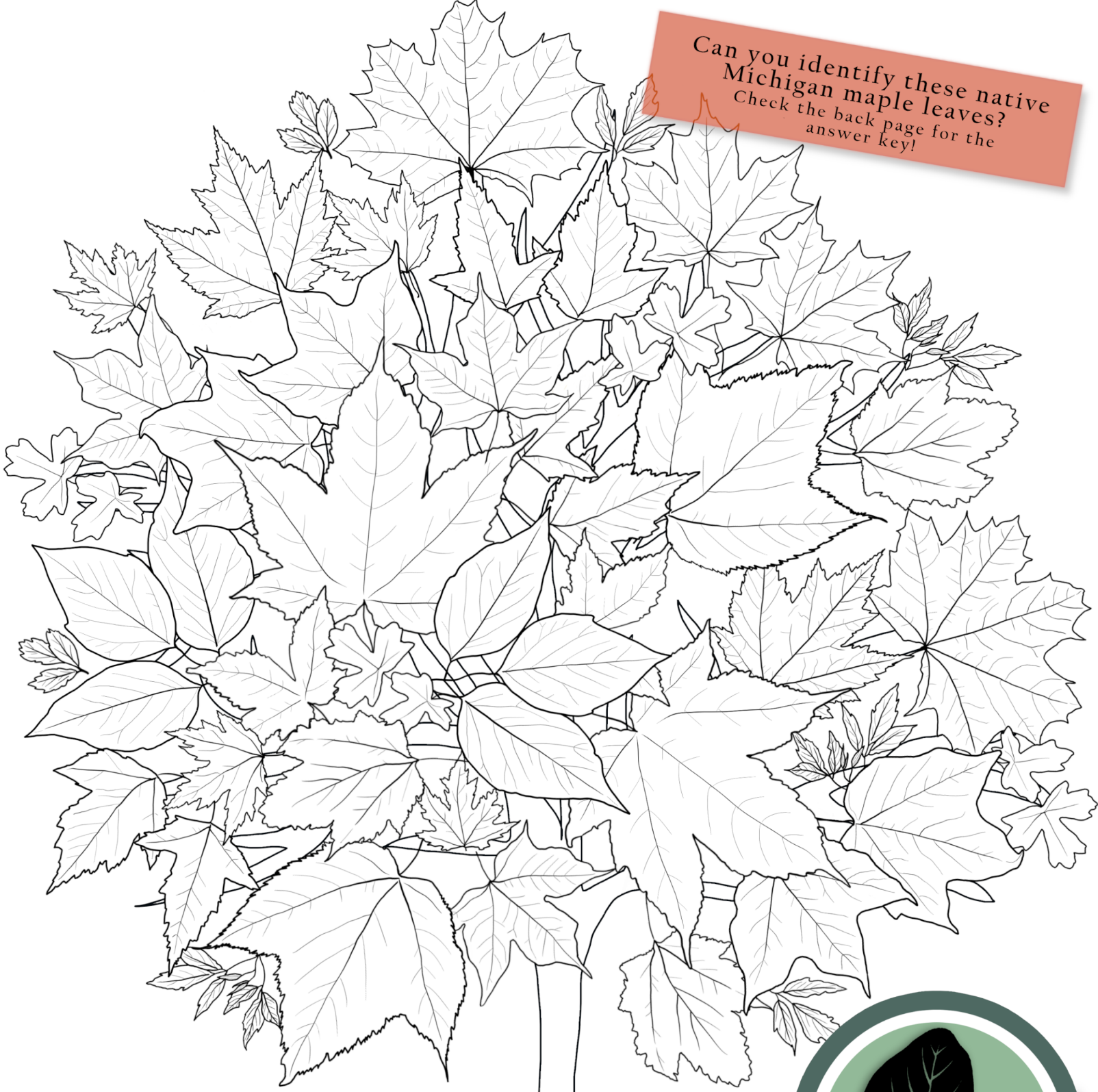


Can you identify these native
Michigan maple leaves?
Check the back page for the
answer key!



Michigan Trees

Coloring Book



By Celeste Dufour

About this book

Follow us to keep up to date with the coloring book!



@MSUHerbarium

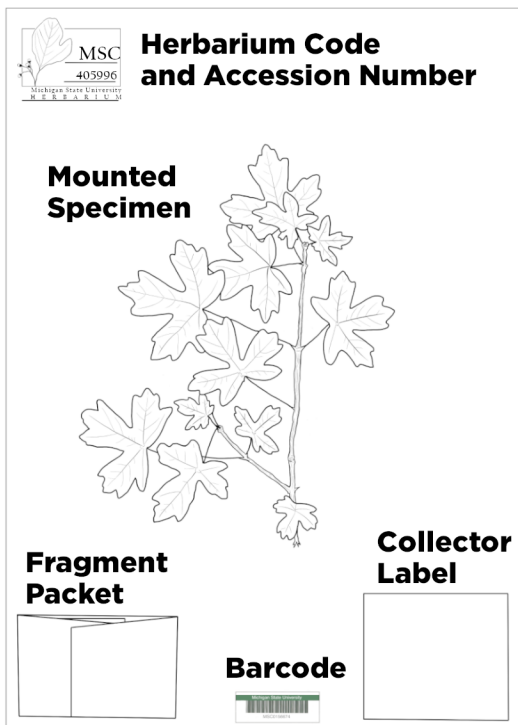


@MSU_Herbarium

The Michigan Trees Coloring Book is a Facebook and Twitter interactive coloring experience that puts your investigative and plant identification skills to the test. Starting January 23rd and ending April 3rd, 2021, each week a new plant specimen coloring page will be released on our social media for you to print, color, match a label to, and add to your own herbarium "collection" book!

You can find tips and tricks for ways to assemble your book on our website at: <https://herbarium.natsci.msu.edu/outreach/coloring-books>

What is a plant specimen?



Most herbarium specimens are plants that have been dried, flattened, and glued to heavy archival paper. Important identifying information is included on the archival paper, such as the collector label, the herbarium stamp with accession number and herbarium code and, occasionally, a barcode.

Collector Label: Includes specific details about the specimen, such as species identification, name of the collector and their personal collection number, the date and location of collection, and habitat.

Barcode: Links the physical herbarium specimen to the data recorded in our online database.

Herbarium Code: Indicates the Herbarium collection that the specimen is a part of. The MSU Herbarium code is "MSC".

Accession Number: Uniquely identifies each specimen that is a part of the Herbarium's collection.

Fragment Packet: Contains small pieces of the specimen that have fallen off during handling.

What is an herbarium?

Herbaria are libraries of preserved plants, fungi, and algae specimens, rich with biodiversity and history of earth's flora over time. While the main function of herbaria is to document biodiversity, they do many other things, acting as a valuable resource for scientific research, education, and community outreach.



Storage of herbarium specimens in the MSU Herbarium's compactor system.